

INFINITY EVO CLASS B WOLTMANN METER



The Infinity Evo Woltmann WP complies with all requirements of the Legal Metrology Act (2014), SANS1529-1: 2019 and the National Regulator for Compulsory Specifications (N.R.C.S.) In addition, the meters comply with Directive 2014/32/EU (MID) (Annex MI-001) and European Standard ISO4064.

APPLICATION

- Accurate measurement of volume of cold potable water passing through a pipeline.
- Zone metering and area monitoring.

FEATURES

- Performance to SANS 1529 – 1 : 2019 Class B specifications.
- Directive 2014/32/EU (Annex MI-001) certified
- P68 copper can register with scratch resistant mineral glass lens.
- Pulse ready as standard.
- Magnetic reed switch, inductive pulser or radio module options.
- Performance is not affected by installation conditions.
- Suitable for both horizontal and vertical installation (UP↑).
- Serial number printed on dial face
- Registers have magnetic protection to prevent magnetic interference and tampering.
- Meter body is manufactured from SG cast iron ensuring extra strength and shock resistance.
- The meter body is epoxy coated both internally and externally.
- The steel pivot + synthetic sapphire bearings ensure and long-term durability and accuracy.
- The internal mechanism is manufactured from hard wearing anhygroscopic anti-scaling virgin engineering plastics.
- The meter has a built-in flow straightener.
- No upstream and downstream straight pipe requirements. (U0-D0)
- The nominal working pressure is 1600 kPa. (16 Bar)
- The maximum working temperature is 50° C.
- Fully shrouded pre-calibrated interchangeable internal mechanisms are available for ease of maintenance.
- The meter body has no effect on accuracy.
- The calibration vane is situated in a protected by-pass thus preventing impact and movement of the calibration vane by suspended solids in the pipeline resulting in the meter losing accuracy.
- The meter can be marked with a QR code with meter serial number for GPS location and identification.

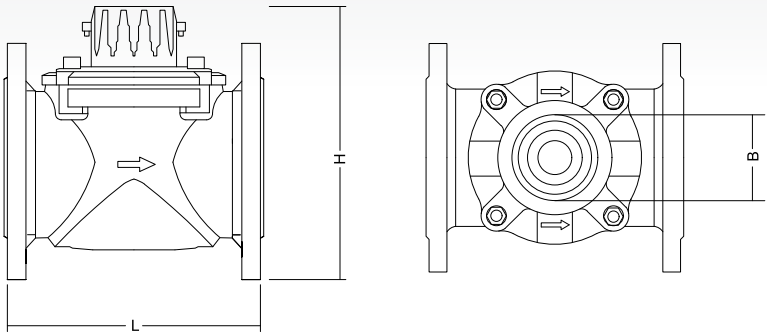
PERFORMANCE SPECIFICATIONS

METER SIZE (mm)	Permanent Flow rate qp ±2% (m³/h)	Transitional Flow rate qt ±2% (m³/h)	Minimum Flow rate q/min ±5% (m³/h)	Factor	Minimum Reading (m3/h)	Pulse Value Litres per pulse (INDUCTIVE)	PulseValue Litres per pulse (REED)
50	15	3	0.45	-	0.002	10	100
65	25	5	0.75	-	0.002	10	100
80	40	8	1.2	-	0.002	10	100
100	60	12	1.8	-	0.002	10	100

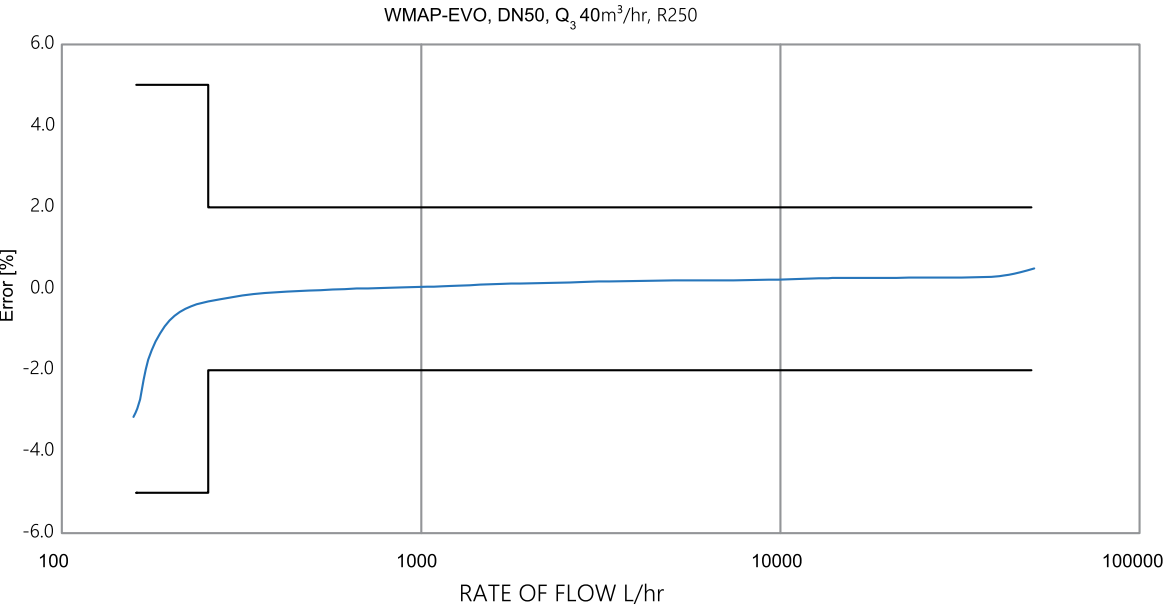
Please note - These performance figures are correctly calculated and comply strictly with the requirements of SANS 1529-1 : 2019 (Section 4.9 Metrological Classes - Table 1.)

DIMENSION TABLE

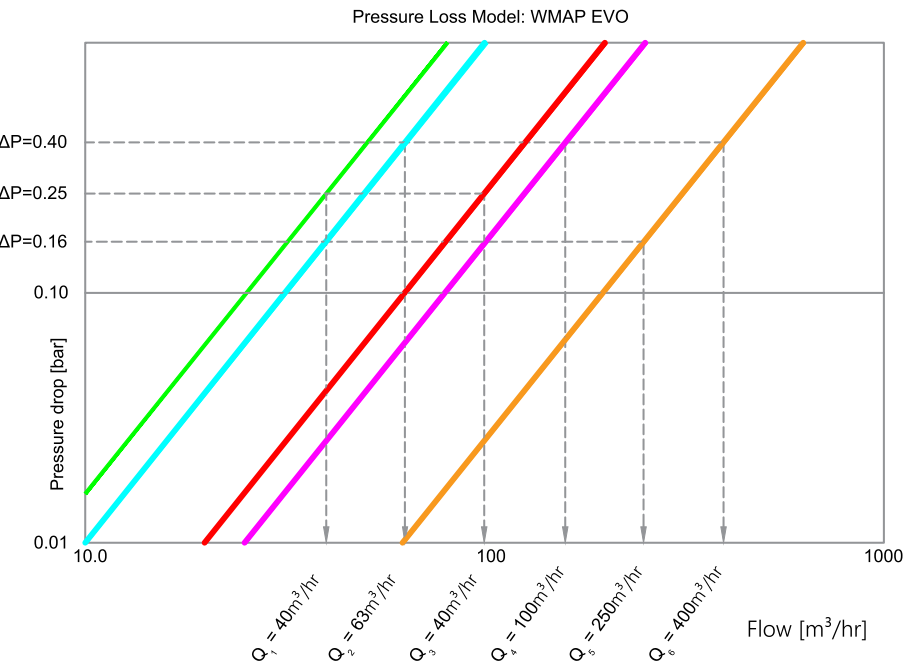
METER SIZE (mm)	Length (mm)	Height (mm)
50	200	209
65	200	218
80	225	249



TYPICAL ERROR CURVE



HEADLOSS CURVE



COMMUNICATION



FLOWPULSE



REED SWITCH WOLTMANN

FLOWPULSE BI- DIRECTIONAL INDUCTIVE PULSER

- Power supply: lithium battery; service life 12 years (standard configuration)
- Safe from magnetic fields
- Protection rating: IP68
- Flow Pulse: for transmission of data to a digital remote reading unit



MECHANICAL REED SWITCH PULSER

- Easy to install and replace
- No influence on the meter's performance
- Protection rating: IP68

