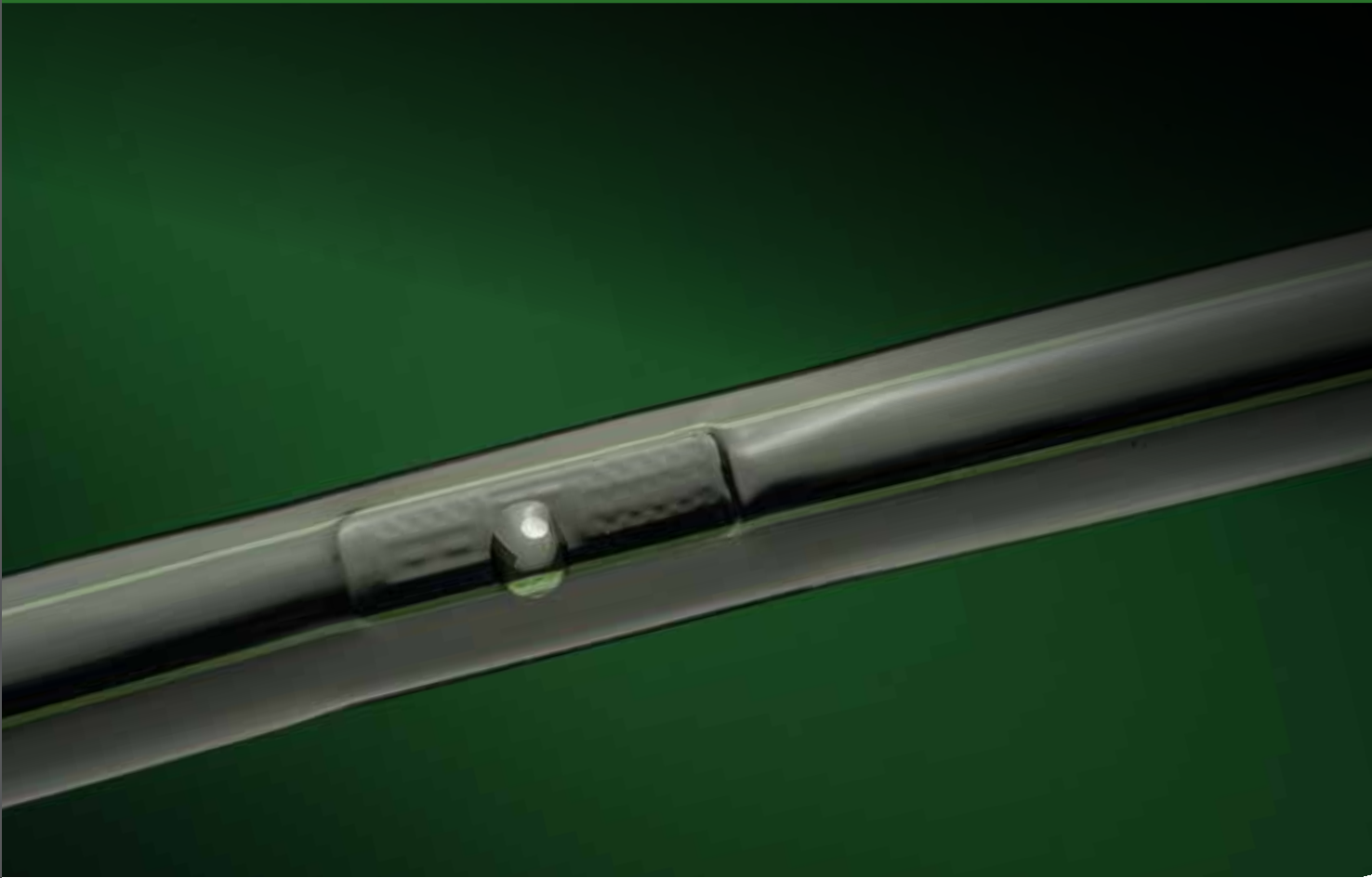


D1500

TRUSTED IRRIGATION WITH RESULTS

D1500



D1500 Thin Wall Drip Line

- RESISTANT : against clogging and adverse field conditions
- VERSATILE : wide range of configurations to meet your expectations
- USER FRIENDLY : Easy & fast field installation

www.Rivulis.com

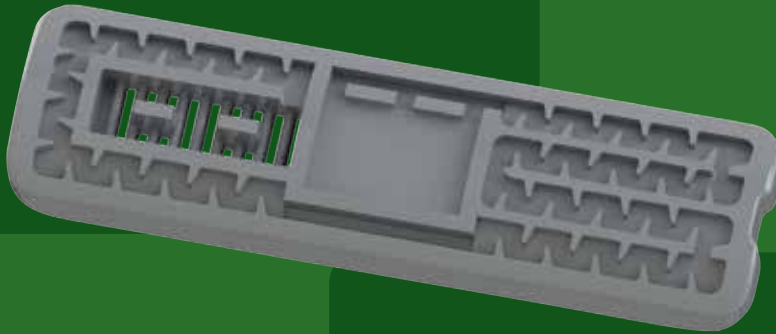
 **Rivulis**



RESISTANT AGAINST CLOGGING

THE LARGEST FILTRATION AREA

Rivulis D1500 turbulent dripper features one of the largest inlet filters for flat drip emitters on the market. The additional filtration area provides outstanding protection against clogging.



THE LARGEST LABYRINTH CROSS SECTION

Regardless of how good an emitter's inlet filters are, inevitably some particles will enter the labyrinth. When this occurs, it is important to have a large cross section (width x height) so the particles can pass easily and not clog the emitter.

Once again, Rivulis D1500 design has one of the largest labyrinth cross sections on the market.

BUILT TO LAST IN THE MOST ADVERSE FIELD CONDITIONS:

D1500 is available in a wide range of wall thicknesses.

It is recommended to use thicker wall when drip line may encounter adverse field conditions such as:

- Heavy or rocky soils
- Where insect are a problem
- Where drip line is to be moved and reused for multiple crop cultivations
- Exposure to extreme temperature and sunlight

WIDE RANGE OF CONFIGURATIONS TO MEET YOUR EXPECTATIONS

16 mm & 22 mm

Maximum Drip line run length (m) with Emission Uniformity of 90% (1bar)

Nominal Ø	Wall Thickness		Internal Ø	Outside Ø	Nominal Flow Rate at 1.0 bar pressure	Maximum Operating Pressure	Roll Length (according to emitter spacing)	Maximum Run Length (90% E.U. at 1 bar) x spacing between Emitters (cm)							
	(mm)	(mil)						(mm)	(mm)	(l/h)	(bar)	(m)	15	20	25
16	6	0.150	16.1	16.40	0.8	1.0	2300 (15 cm) 2400 (20 cm) 2500 (25 cm) 2600 (≥30 cm)	98	122	143	162	198	232	262	305
					1.2			74	91	108	122	149	174	197	229
					1.5			64	79	93	106	129	151	170	198
					2.4			49	60	71	80	98	114	129	150
					3.6			36	44	52	59	72	84	95	111
	8	0.200	16.1	16.50	0.8	1.2	2200 (15 cm) 2300 (20 cm) 2400 (25 cm) 2500 (≥30 cm)	100	124	146	166	203	237	268	311
					1.2			76	94	110	125	153	179	202	236
					1.5			64	79	93	106	129	151	170	198
					2.4			51	62	73	83	101	118	133	155
					3.6			36	44	52	59	72	85	95	111
	10	0.250	16.1	16.60	0.8	1.4	1800 (15 cm) 2000 (20 cm) 2100 (25 cm) 2300 (≥30 cm)	101	125	147	167	204	238	269	313
					1.2			76	94	110	125	153	179	202	236
					1.5			64	79	93	106	129	151	170	198
					2.4			51	62	73	83	102	119	134	155
					3.6			36	44	52	59	72	85	96	112
	12	0.305	16.1	16.70	0.8	1.5	1300 (15 cm) 1400 (20 cm) 1500 (25 cm) 1700 (≥30 cm)	101	125	147	167	204	238	269	314
					1.2			76	94	110	125	153	179	202	236
					1.5			67	83	97	110	135	157	178	207
					2.4			51	63	73	83	102	119	134	156
					3.6			36	44	52	59	73	85	96	112
25	0.635	14.2	15.48	0.8	2.5	700 (15 cm) 750 (20 cm) 800 (25 cm) 850 (≥30 cm)	88	109	128	145	177	206	233	272	
				1.2			62	76	90	102	124	145	164	191	
				1.5			52	64	76	86	105	122	138	161	
				2.4			42	51	60	68	84	97	110	128	
				3.6			31	39	45	52	63	74	83	97	
35	0.900	13.8	15.60	2.4	3.5	600 (≥30 cm)	40	49	58	66	80	94	106	122	
				3.6			30	37	44	49	60	71	80	93	
22	8	0.200	22.2	22.60	0.8	1.0	1300 (15 cm) 1400 (20 cm) 1500 (25 cm) 1600 (≥30 cm)	170	211	249	284	349	408	463	540
					1.2			127	158	187	213	261	306	347	404
					1.5			112	139	164	187	230	269	305	356
					2.4			84	105	123	140	172	201	227	265
					3.6			59	74	87	100	122	144	163	190
	10	0.250	22.2	22.70	0.8	1.3	1100 (15 cm) 1200 (20 cm) 1300 (25 cm) 1400 (≥30 cm)	170	212	251	286	352	412	467	544
					1.2			127	158	186	212	261	305	346	404
					1.5			111	139	164	187	230	269	305	355
					2.4			85	105	124	141	173	202	229	266
					3.6			59	74	88	100	123	144	164	191
	12	0.305	22.2	22.80	0.8	1.4	950 (15 cm) 1050 (20 cm) 1150 (25 cm) 1250 (≥30 cm)	171	213	251	287	352	412	468	545
					1.2			127	158	186	212	261	305	346	404
					1.5			111	139	164	187	230	269	305	355
					2.4			85	105	124	141	173	202	229	267
					3.6			59	74	88	100	123	145	164	191

EASY & FAST INSTALLATION

Dual stripes on emitter side of the tubing quickly show installers which side should face upwards.

Recommended applications:

- On flat terrain
- On surface with / without opaque plastic mulch
- Buried (5-10cm) with / without transparent plastic mulch

Filtration:

- 130 micron / 120 mesh for flow rates > 0,5 l/h
- Please consult with an irrigation specialist for filtration requirements for your specific application.

Layflat & Fast ring connectors

For a complete and reliable drip line installation, ask your representative about the Rivulis FAST RING CONNECTORS & LAYFLAT



CROP APPLICATIONS ?

Fruit & vegetable crops

Strawberry, Melon, Pumpkin, Cucumber, Tomato, Cabage, Broccoli, Carott, Onion, Garlic , Beans, Pepper, Chili

Open field row crops

Corn, Soybean, Sunflower, Sugar Cane, Orchards



www.agrinet.co.za

Samrand: 012 657 2222, enquiries@agrinet.co.za
Bellville: 021 959 5420, belbestel@agrinet.co.za



www.Rivulis.com

13 Chemin de Novital
31150 Lespinasse, France
Tel: +33 (0)5 34 27 05 05
Mail: Marketing_EMEA@Rivulis.com