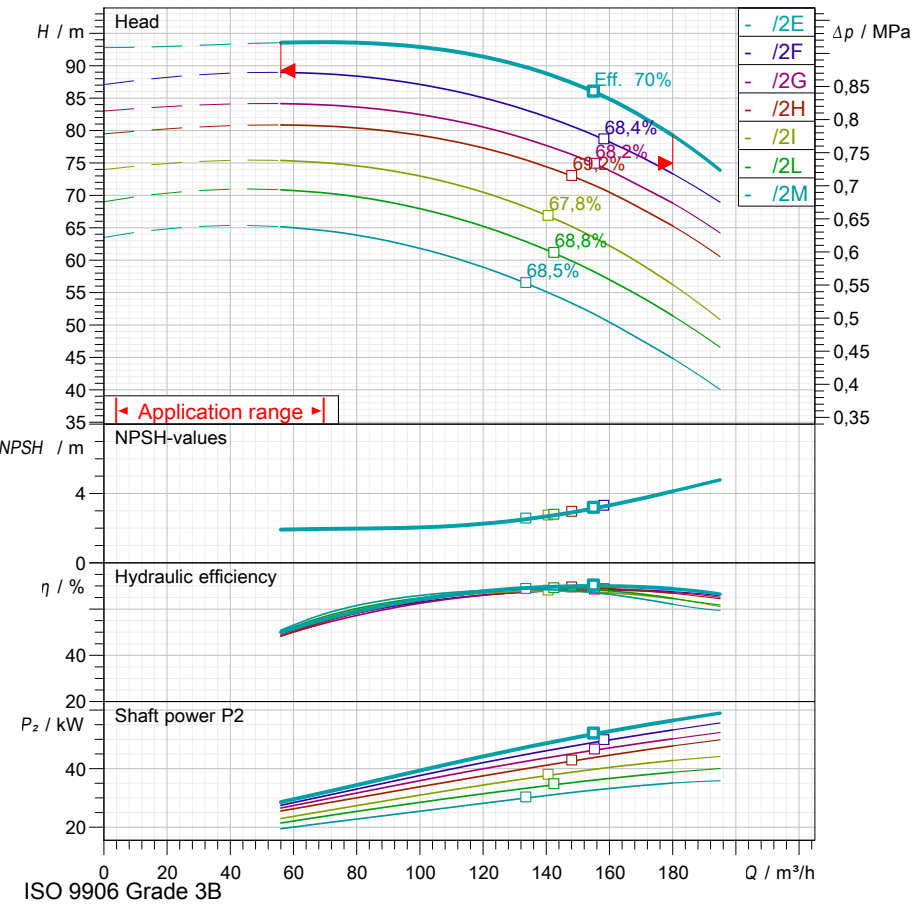


Technical data

S4K125/2E



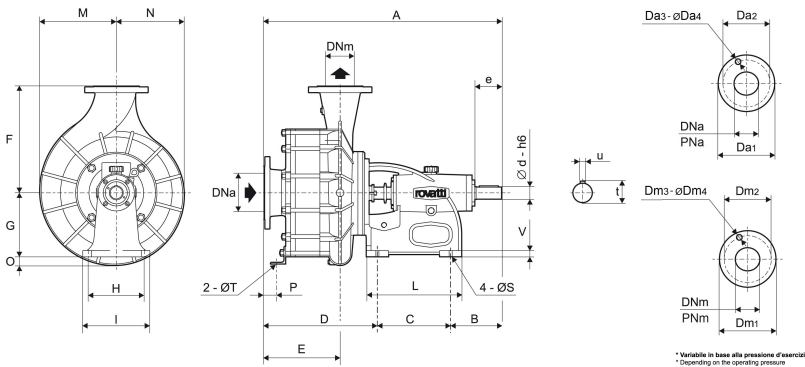
Operating data specification	
Capacity	
Head	
Fluid	Pure water
Type of installation	<Single head pump>

Pump operating data	
Design	S4K125/2E
Impeller Ø	
Speed	1450 1/min
Flow	
Head	
Shaft power P2	
Efficiency	
Head (Q=0)	92,8 m
Non return valve loss	

Electric motor technical data	
Design	
Rated power	
Frequency	
Number of poles	
Nominal speed	
Rated voltage	
Starting mode	
Rated current	
Insulation class	
Degree of protection	

Use limits	
Max N° startings/hour	
Max. runing time with Q=0	2 min
Max. solids contents	40 g/m ³
Max. pumped liquid temperature	90 °C
Maximum density	998 kg/m ³
Maximum viscosity	1 mm ² /s

Materials	
Suction bowl	Cast iron
Wear ring	Cast iron
Impeller	Cast iron
Pump body	Cast iron
Twiner system®	Stainless steel
Stuffing-box packing	Synthetic fibers
Bearing support	Cast iron
Tie rod	Steel
Diffuser shell	Cast iron
Diffuser	Cast iron
Shaft protection bushing	Steel
Shaft	Steel



* Variabile in base alla pressione d'esercizio
* Depending on the operating pressure
* Selon la pression de service
* Abhängig von dem Druck
* Variable con la presión

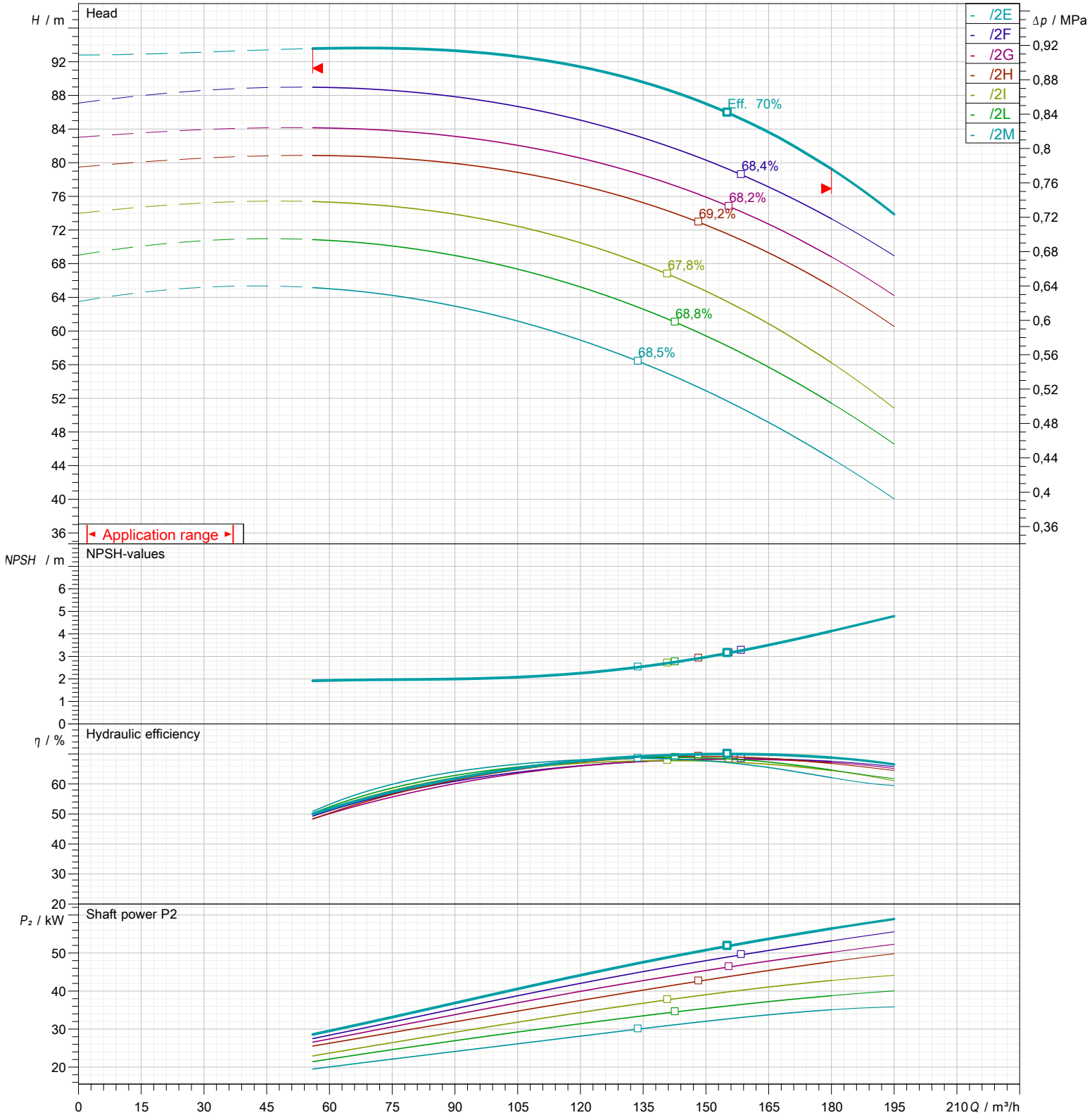
Dimensions in					Total weight				
mm					236 kg				
DNa	125	G	280	S	24	Da2	210	Da3	8
DNm	100	H	240	T	\	PNe	10		
A	907	I	285	V	30	Dm1	220		
B	197	L	400	d	48	Dm2	180		
C	300	M	286	e	110	PNr	16		
D	410	N	266	u	12	Da4	19		
E	280	O	\	t	52	Dm4	8		
F	400	P	\	Da1	250	Dm4	19		

Performance curves

S4K125/2E

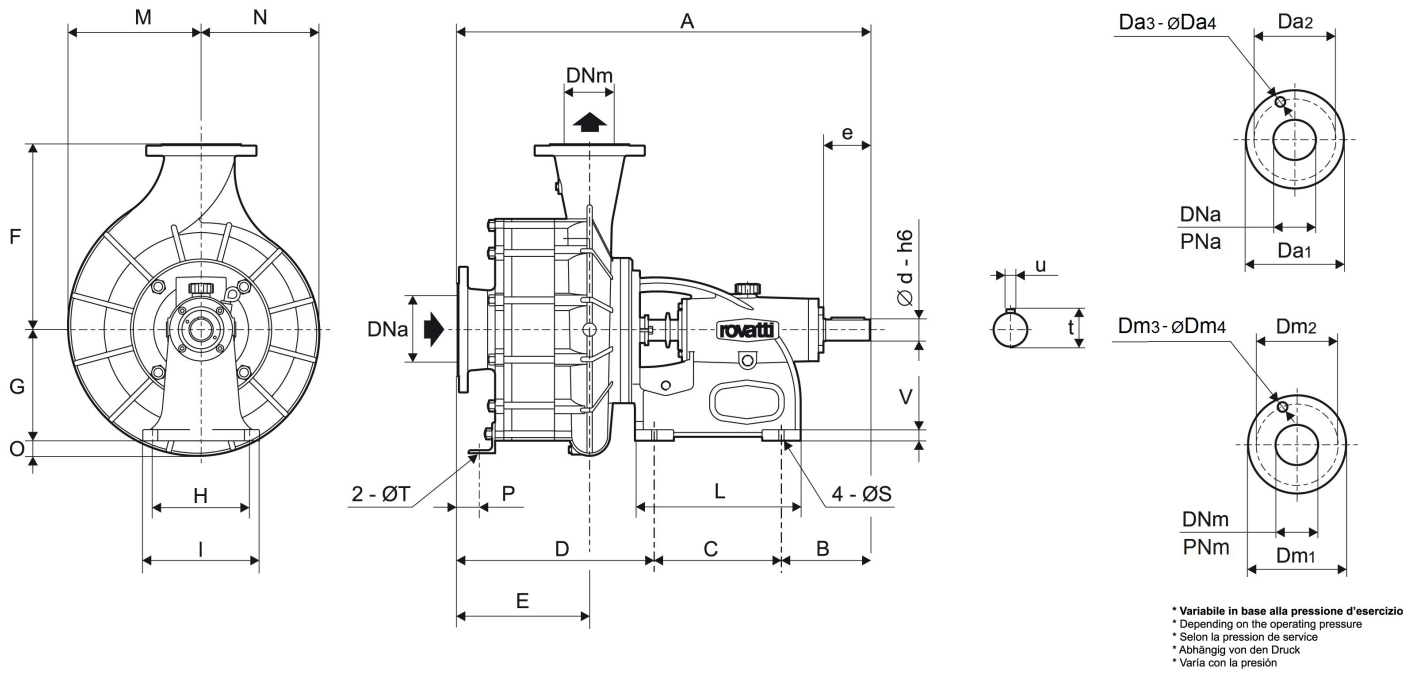
Performances

Speed	1450 1/min	Density	998 kg/m ³
Flow	Min. 56 m ³ /h	Viscosity	1 mm ² /s
	Max. 180 m ³ /h	Temperature	20 °C
Efficiency	Max. 155 m ³ /h	Tolerances	ISO 9906 Grade 3B



Types of installation

S4K125/2E



* Variabile in base alla pressione d'esercizio
 * Depending on the operating pressure
 * Selon la pression de service
 * Abhängig von den Druck
 * Varía con la presión

Dimensions in	mm	Total weight	236 kg
DNa	125	u	12
DNm	100	t	52
A	907	Da1	250
B	197	Da2	210
C	300	PNa	10
D	410	Dm1	220
E	280	Dm2	180
F	400	PNr	16
G	280	Da4	19
H	240	Dm4	8
I	285	Dm4	19
L	400	Da3	8
M	286		
N	266		
O	\		
P	\		
S	24		
T	\		
V	30		
d	48		
e	110		

rovatti pompe

Products you can rely on

Rovatti cataphoresis coating

Cataphoresis is an electrochemical coating process for cast iron components provided by Rovatti Pompe to improve protection from weather conditions, alkali and diluted acids.

Rovatti cataphoresis treatment is characterized by a high adhesion to the surfaces and uniformity of the coating also in the inner cavities of the component.

The result is a black semi-gloss protective layer with homogeneous thickness.

Rovatti cataphoresis treatment produces a reduced surface friction in the hydraulic channels improving pump efficiency and increasing driving motor life.

Components treated with the Rovatti cataphoresis coating are easily removable during the usual maintenance operations.



HEADQUARTERS:
42042 FABBRICO (REGGIO EMILIA)
ITALY
Tel +39 0522 66 50 00
Fax +39 0522 66 50 20
info@rovatti.it
www.rovatti.it

2000 DIVISION:
42047 ROLO (REGGIO EMILIA)
ITALY
Tel +39 0522 66 72 17 / 0522 66 72 25
Fax +39 0522 66 09 79
info@rovatti.it
www.rovatti.it

IPERSOM DIVISION:
42042 FABBRICO (REGGIO EMILIA)
ITALY
Tel +39 0522 66 08 15
Fax +39 0522 66 02 70
info@rovatti.it
www.rovatti.it



rovatti pompe

Products you can rely on

Twinner System®

To make maintenance operation more efficient, it is essential to reduce the time and the cost of any intervention. The exclusive Twinner System® by Rovatti allows to easily operate on gland packing box without removing shaft support.



Available on many pumps of the wide Rovatti production range the Twinner System® consists of:

- Flange in two stainless steel halves that through a simple extraction greatly facilitates the replacing operations of stuffing-box packing.
- Easy to adjust and long-term functioning stuffing-box packing on stainless steel chromium coated bush.
- Stainless steel screws that allow easy disassembling, control and stuffing-box replacement procedures even after several operation hours.



HEADQUARTERS:
42042 FABBRICO (REGGIO EMILIA)
ITALY
Tel +39 0522 66 50 00
Fax +39 0522 66 50 20
info@rovatti.it
www.rovatti.it

2000 DIVISION:
42047 ROLO (REGGIO EMILIA)
ITALY
Tel +39 0522 66 72 17 / 0522 66 72 25
Fax +39 0522 66 09 79
info@rovatti.it
www.rovatti.it

IPERSOM DIVISION:
42042 FABBRICO (REGGIO EMILIA)
ITALY
Tel +39 0522 66 08 15
Fax +39 0522 66 02 70
info@rovatti.it
www.rovatti.it

