

TRACTOR PUMP SINGLE STAGE 50x50MM

rovatti pompe

TO-50

APPLICATION

The Rovatti TO-50 and TOF-50 Horizontal single stage centrifugal PTO pumps are a compact, lightweight and easy to handle. This Rovatti range of PTO tractor driven pumps can deliver flowrates of up to 30 m³/h and pressures of up to 50 m, making it ideal for a range of applications. The applications of the Rovatti PTO pumps include irrigation, liquid transfer, firefighting systems and filling of dams and reservoirs. This TO-50 can be mounted on a trailer and connected to the PTO shaft of a tractor with the use of a Cardan shaft. The TOF-50 connects directly to the PTO shaft of a tractor.



APPLICATION

- The compact execution, the low weight and the easy handling are able to ensure that these smart pumps are the perfect equipment for irrigation and general liquid transfer
- One operator: Pump attaches quickly, tractor does the lifting and handling
- Sturdy construction: Light and robust cast iron pump for troublefree operation

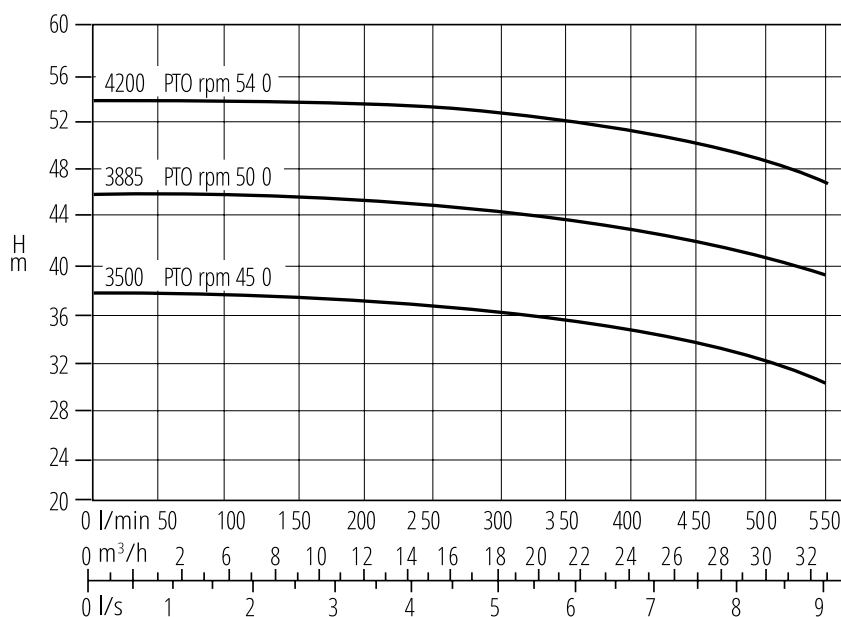
OPERATING CONDITIONS

- Max. running time with Q=0: 1 min
- Maximum solid contents : 40 g/m³
- Maximum water temp: 60°C
- Maximum pressure: 50 m
- Max. flow: 30 m³/h

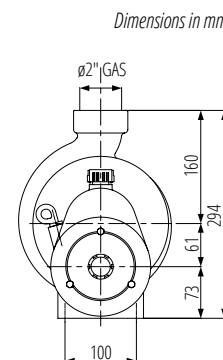
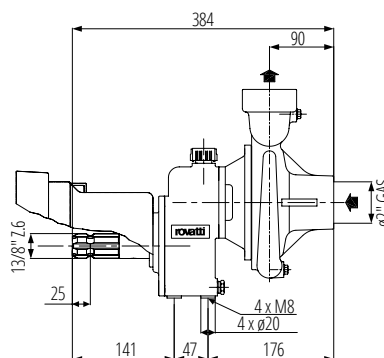
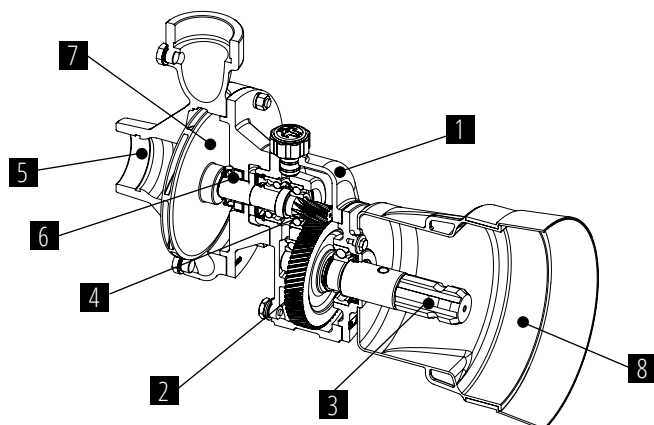
MATERIALS

- | | |
|---------------------------|-----------------------|
| 1 - Gear box | - Cast Iron |
| 2 - PTO transmission gear | - Case Hardened Steel |
| 3 - PTO shaft | - Case Hardened Steel |
| 4 - Shaft pinion | - Case Hardened Steel |
| 5 - Pump body | - Cast Iron |
| 6 - Mechanical seal | - Graphite/Ceramic |
| 7 - Impeller | - Cast Iron |
| 8 - Cardan joint guard | - Rubber |

TYPE	PACKAGE DIMENSION (mm)			WEIGHT
Single Stage	L	W	H	kg
TO-50	384	265	360	20



TRACTOR POWER MIN. (HP)	INLET X OUTLET	GEAR RATIO	PTO rpm	CAPACITY									
				ℓ/min	100	200	300	350	400	450	500	550	
				ℓ/s	1.6	3.3	5	5.8	6.6	7.5	8.3	9.1	
15	2" x 2"	1 : 7.77	540	H(m)	53.5	53.2	52.5	52	51.2	50.5	48.7	47	
HP				4.6	5.7	6.7	7.2	7.8	8.3	8.7	9.2		
10			500	H(m)	46	45.5	44.5	44	43	42	41	39.8	
				HP	3.7	4.7	5.6	6	6.4	6.8	7.1	7.4	
7.5			450	H(m)	37.2	36.7	36	35.2	34.4	33.5	32.3	30.6	
				HP	2.8	3.6	4.3	4.6	4.9	5.2	5.5	5.8	



Dimensions in mm