

# SUBMERSIBLE ELECTRIC DRAINAGE PUMPS



309ECM75/DS • 309ECM100/DS

## APPLICATION

Submersible drainage pumps with plunged open impeller with grid. Suitable for clean water, even with small suspended solids, for drainage of flowing and collection of rain water.



## OPERATING CONDITIONS

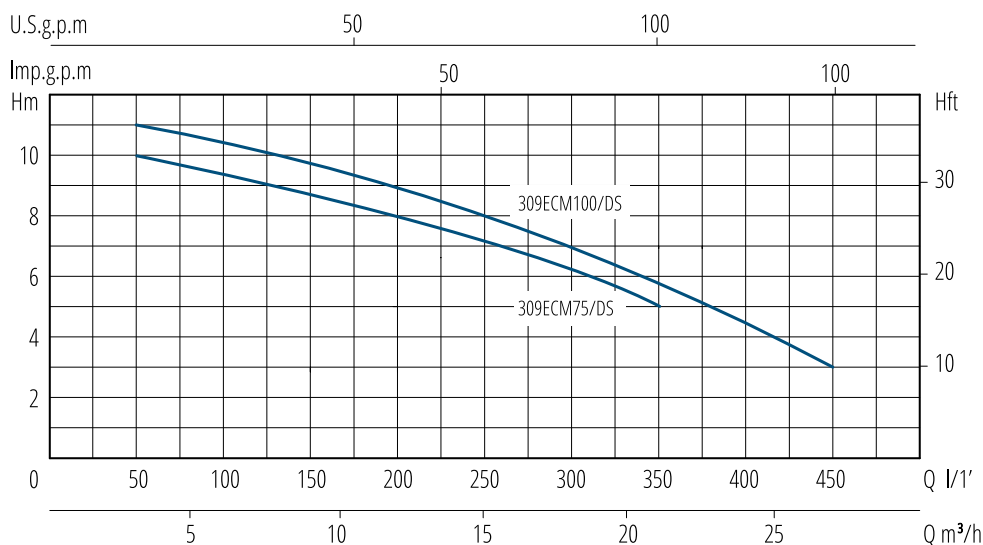
- Liquid temperature up to 35°C
- Maximum immersion depth 20 m (with a cable of the appropriate length)
- Grain size inlet Ø 10 mm
- Min. suction level 100 mm
- Continuous duty

## MOTOR

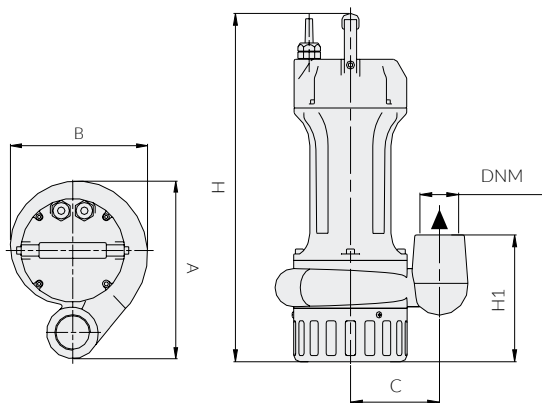
- Insulation Class F
- Protection IP68
- Thermic protection (only single-phase)

## MATERIALS

- Motor body - Cast Iron
- Pump body - Cast Iron
- Impeller - Cast Iron
- Shaft with rotor - Stainless Steel AISI 304
- Suction strainer - Stainless Steel AISI 304
- Mechanical seal with oil chamber - Silicon/Silicon/NBR



TYPE	NOMINAL POWER		INPUT POWER	AMPERE	Q = CAPACITY												
	HP	KW	KW		Single-phase	m <sup>3</sup> /h	3	6	9	12	15	18	21	24	27		
Single-phase	P2		P1	Single-phase	lt/1'	50	100	150	200	250	300	350	400	450			
230V-50Hz					1 x 230V	Total head in meters w.c.											
309ECM75/DS	0,75	0,55	0,9	4	H	10	9,5	9	8	7	6	5					
309ECM100/DS	1	0,75	1,1	4,8	(m)	11	10,5	10	9	8	7	6	4,5	3			



TYPE	DIMENSIONS mm							WEIGHT
Single-phase	A	B	C	H	H1	DNM	CABLE	kg
309ECM75/DS	238	184	110	440	157	1"2	10 mt H07RNF	17,5
309ECM100/DS	238	184	110	440	157	1"2	10 mt H07RNF	18