

SUBMERSIBLE SEWAGE PUMPS



309SQ6555 • 309SQ8575

APPLICATION

Thanks to their important features, SQ pumps are the ideal solution for the carriage of waters coming from cleaners, sewing systems, zootechnic farms, slaughter-houses, foundries and for irrigation in agricultural field. Applicable in fishing industry, paper mills and in civil and industrial plants. The pumps adopt open single-blade impeller which allows free passage of suspended parts and high performance.



OPERATING CONDITIONS

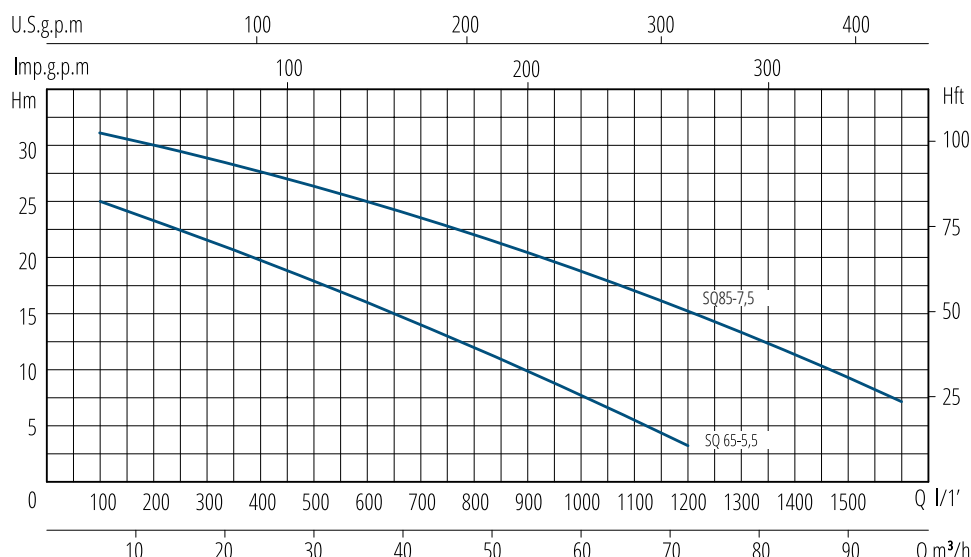
- Liquid temperature 0 - 35°C (according to EN 60335-2-41) up to 50°C (for other uses)
- Maximum immersion depth 20 m (with a cable of the appropriate length)
- Liquid PH from 4 to 10
- Continuous duty with completely submersed pump
- Liquid density 1.2 kg/dm³

MOTOR

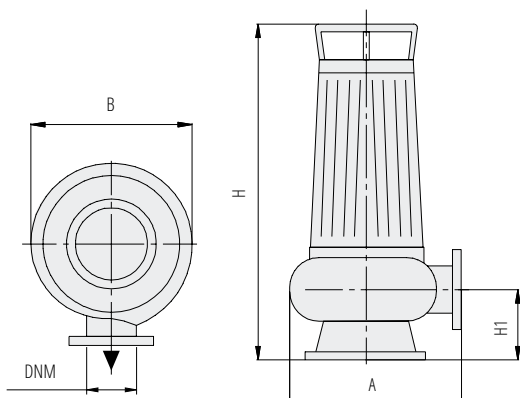
- Insulation Class F
- Protection IP68

MATERIALS

- Motor body - Cast Iron
- Pump body - Cast Iron
- Impeller - Cast Iron
- Shaft with rotor - Stainless Steel AISI 304
- Double mechanical seal in oil chamber - Ceramic/Graphite/NBR - Silicon/Silicon/NBR



TYPE	NOMINAL POWER		INPUT POWER	AMPERE	Q = CAPACITY										
	HP	KW			Three-phase	m ³ /h	6	12	18	24	36	48	60	72	84
230/400V-50Hz				3 x 400V	lt/1'	100	200	300	400	600	800	1000	1200	1400	1600
					Total head in meters w.c.										
309SQ6555	7,5	5,5	6,2	10	H (m)	25	23	21,5	20	16	12	7,5	3	-	-
309SQ8575	10	7,5	8,5	13,5	H (m)	30	28,5	27,5	26,5	24	21	17,5	13	10	6



TYPE	DIMENSIONS mm						WEIGHT
	A	B	H	H1	Grain size inlet (mm)	CABLE	
309SQ6555	330	280	670	130	ø 70	10 mt H07RNF	119
309SQ8575	330	280	700	130	ø 70	10 mt H07RNF	123