

303HBI2-40 • 303HBI2-40M • 303HBI2-50 • 303HBI2-50M
 303HBI2-60 • 303HBI2-60M

Stainless steel, multistage, non-self priming pump. Designed for pumping freely flowing non-corrosive, non-explosive and non-flammable liquids. Liquids to be pumped must also be free of solid matter, sands, fibers and similar materials.



APPLICATION

- Water supply & pressure boosting
- Air-conditioning
- Water treatment
- Heating & cooling in industrial processes
- Industrial washing & dish-washing Machines (Softened water)
- Fertilizer/Dosing Systems

OPERATING CONDITIONS

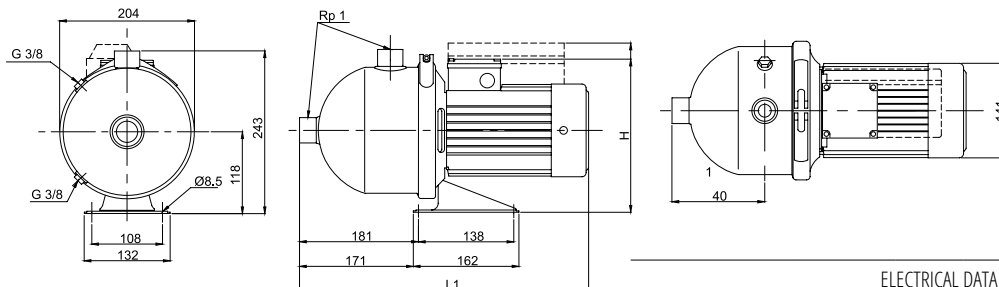
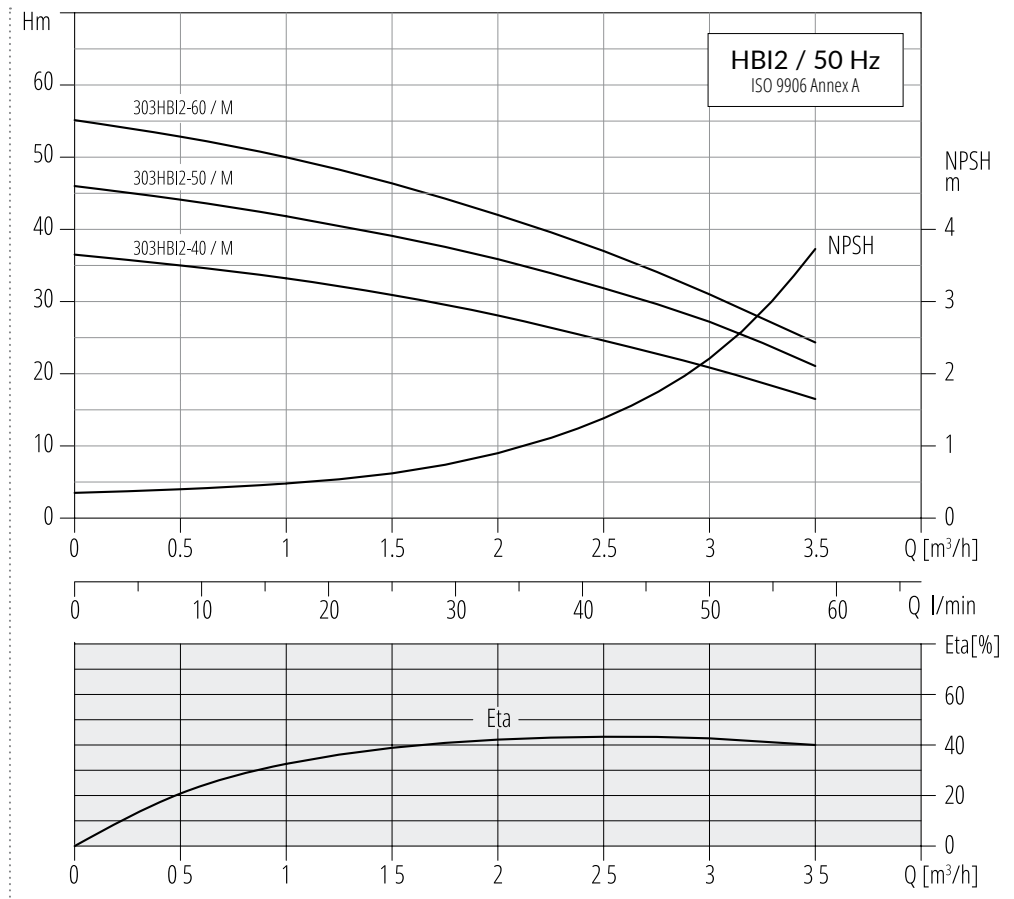
- Liquid temperatures from 0°C to 110°C
- Max ambient temperature: +40°C
- Max operating pressure: 10 kg/cm²
- Max inlet pressure limited by max operating pressure

MOTOR

- Insulation Class F
- Protection IP54
- Overload protection

MATERIALS

- Shaft - 431 Stainless Steel
- Impeller - 304 Stainless Steel
- Strainer - 304 Stainless Steel
- Discharge Head - 304 Stainless Steel



ELECTRICAL DATA - 2850 min⁻¹

TYPE	DIMENSIONS mm				WEIGHT kg
	Single-phase		Three-phase		
	L1	H	L1	H	
303HBI2-40/M	403	255	403	233	10.1
303HBI2-50/M	403	255	403	233	10.8
303HBI2-60/M	403	255	403	233	11

TYPE	1φ 220-240 V			3φ Δ220-240 / Y 380-415 V		
	I _{1N} [A]	P ₁ [W]	P ₂ [W]	I _{1N} [A]	P ₁ [W]	P ₂ [W]
303HBI2-40	2.7 - 2.6	580	455	2.4 - 2.7 / 1.4 - 1.6	650	505
303HBI2-40M	2.7 - 2.6	580	455	2.4 - 2.7 / 1.4 - 1.6	650	505
303HBI2-50	3.2 - 3.3	720	550	2.7 - 3.0 / 1.6 - 1.8	810	620
303HBI2-50M	3.2 - 3.3	720	550	2.7 - 3.0 / 1.6 - 1.8	810	620
303HBI2-60	3.8 - 3.6	830	635	2.9 - 3.3 / 1.7 - 1.9	910	690
303HBI2-60M	3.8 - 3.6	830	635	2.9 - 3.3 / 1.7 - 1.9	910	690