

THE NEW AND IMPROVED

MULTIPOINT VALVE SERIES 2



MULTIPOINT VALVE

The new and improved Multiport Valve Series 2 increases reliability through product innovation with a new integrated Wagon Wheel Gasket and Diffuser

This combined innovation results in less risk of water loss combined with the new longer life Wagon Wheel Gasket.

SUN COMMAND MULTIPOINT VALVE SERIES 2



PRODUCT FEATURES & BENEFITS

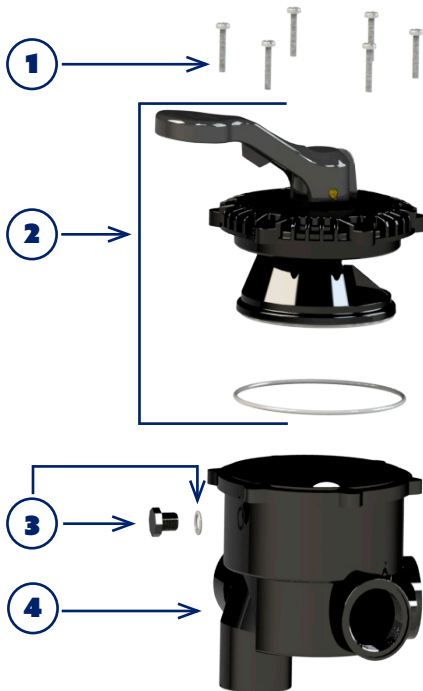
- Bigger handle for easier adjustment in either direction.
- Pressure gauge plug now sealed with o'ring.
- Compact body design.
- D40 connections on all ports.
- Available in Black.
- The new Multipoint Valve Series 2 is unique and not compatible with any other brand or product.
- The new Multipoint Valve Top Series 2 does not fit the old Sun Command Multipoint Valves.
- The new Multipoint Valve Series 2 is fully compatible with all Sun Command Filters.

**NEW
DESIGN**

**NEW
EASY
ADJUST
HANDLE**

**NEW
INTEGRATED
WAGON
WHEEL AND
DIFFUSER**

**NEW
LONG LIFE
WAGON
WHEEL**



EXPLODED VIEW COMPONENTS

NO.	DESCRIPTION	QTY
1	MPV Screw & Nut Pack	1
2	SC MPV Top & O'Ring Black incl W/W Series 2	1
3	SC MPV Plug & O'Ring Series 2	1
4	SC MPV Complete Black Series 2	1
5	SC MPV Sight Glass & O'Ring	1