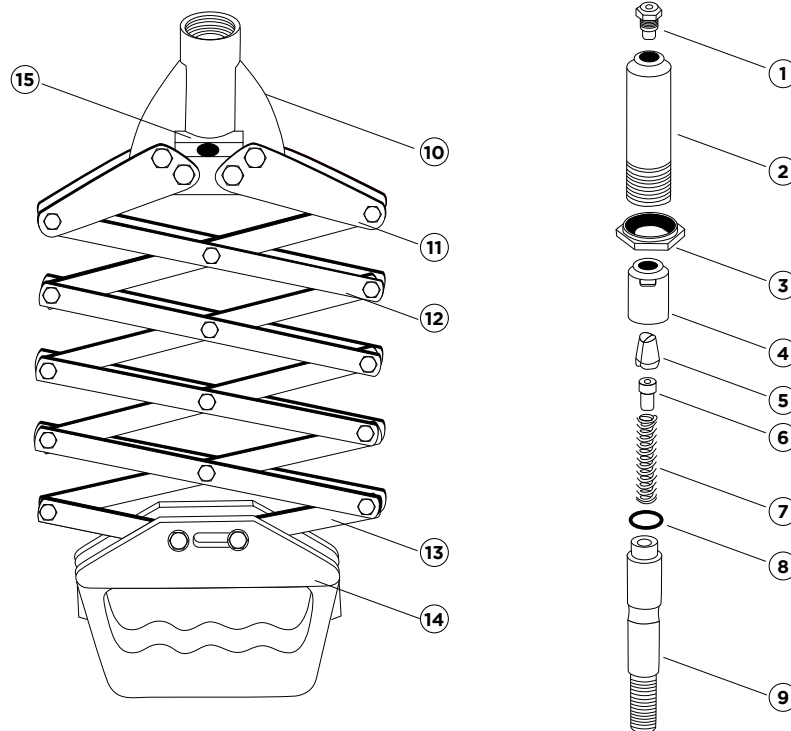




KAUFMANN
HARDWARE



LAZY T RIVETER ASSEMBLY MANUAL



Instructions for Usage & Adjustment:

1. Choose the appropriate rivet and then select the corresponding muzzle size (02.4mm, 03.2mm, or 04.1mm) based on the specifications of the rivet. Tighten the muzzle onto the gun sheel and ensure that the rivet bar slides smoothly through the hole.
2. Turn the muzzle upside down and hold the gun body with one hand while pulling the handle backward with the other hand. Insert the required rivet bar into the muzzle, ensuring that it smoothly fits into the three claws. Do not insert the rivet bar too tightly or loosely. To adjust the fit, loosen the locking nut, adjust the gun sheel by extending it outward to tighten the three claws, and loosen it to loosen the three claws. After adjusting, tighten the locking nut.
3. For components that require tightening, ensure that the drilling diameter is 0.1mm larger than the outer diameter of the rivet body, and that the hole is vertical to the component. This will ensure the best riveting effect.
4. When operating the gun, insert the rivet into the hole of the component and ensure that the rivet bar is fully inserted into the muzzle. The muzzle should be vertical to the component. Push the handle to expand the rivet and then tighten the component. If the rivet bar has not broken, you can push and pull the handle continuously until it breaks.
5. Turn the rivet gun upside down to allow the broken rivet bar to fall out from the end of the gun.
6. During operation, if the locking nut or muzzle becomes loose, tighten them immediately to ensure optimal performance.
7. The three claws are damageable parts, so be sure to change them when the teeth become dull or broken.

NO.	NAME	NO.	NAME	NO.	NAME
1	MUZZLE	6	TOP CORE	11	CONNECTING PLATE
2	GUN SHEEL	7	SPRING	12	LONG SUPPORT
3	LOCKING NUT	8	O-RING (18X2.4)	13	SHORT SUPPORT
4	TIGHTENING SLEEVE	9	GUN CORE	14	HANDLE
5	THREE CLAWS	10	GUN BODY	15	CONNECTING BLOCK